



**Botswana  
Geoscience  
Institute**  
Excellence in Geoscience

BGI Data And Information

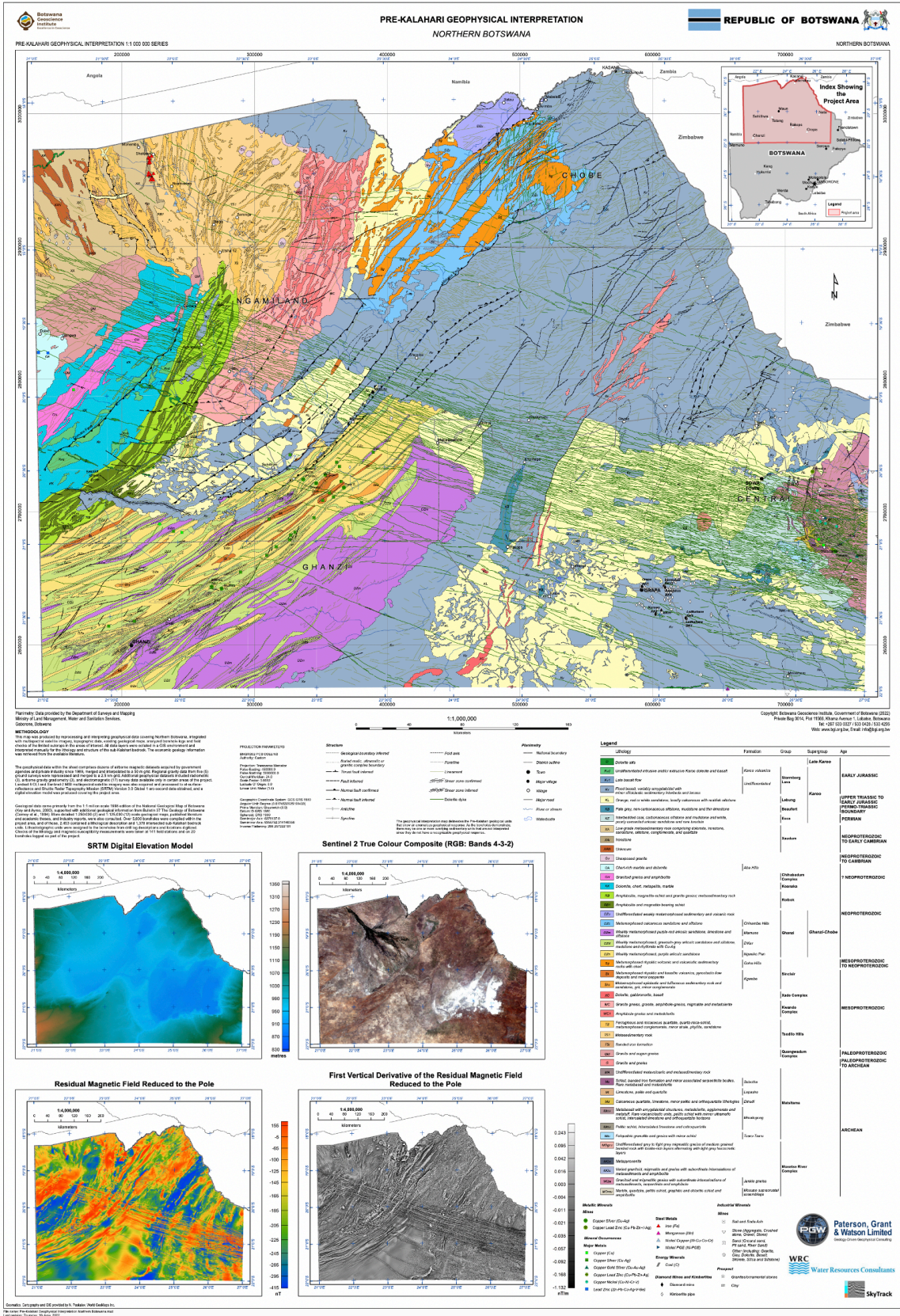
# Catalogue

---

Revised April 2022

---







## ABOUT BOTSWANA GEOSCIENCE INSTITUTE

Botswana Geoscience Institute – (BGI) was established to innovatively apply science and technology to understand the earth for the greater benefit of Botswana and its citizens and broaden the nation's economic base along the mineral sector. The Institute is mandated to undertake research in the field of geosciences, provide specialised geoscientific services and advice in all matters of geoscience and geohazards. The Institute is also responsible for promoting the search for, and exploration of any mineral in Botswana and it is a custodian of all geoscience information.

The Institute Mandate, is detailed in the Botswana Geoscience Institute Act, 2014 and is operationalised through a five (5) Year (2018 - 2023) Strategic Plan adopted in 2018 and revised in March 2020. The BGI mandate is entirely linked to the country's national development goals and strategic imperatives.

The establishment of BGI has presented Botswana with a unique opportunity to set up a geoscience organisation that can meet the needs of its stakeholders and customers. BGI is poised to achieve this by applying diverse professional expertise, historical and tested knowledge, nationwide earth observation infrastructure and strong partnerships and collaborations globally.

# VISION AND MISSION



## VISION

To be a renowned Geoscience Centre



## MISSION

We create economic value through advancing, promoting and disseminating geoscientific knowledge for the benefit of Botswana and our global partners

## VALUES



### RELIABLE

We are reliable custodians of Geoscience information



### INNOVATION

We promote market-oriented and innovative products and services



### PROFESSIONALISM

We espouse professionalism



### INTEGRITY

We create a conducive environment that promotes absolute integrity



### TEAMWORK

Kgetsi Ya Tsie e kgonwa ke go tshwaraganelwa

## BRAND PURPOSE

Our purpose, expressed in our mantra, ***Excellence in Geoscience*** expresses our determination to surpass expected levels of distinction in our practice of geoscience research.



## BGI Data And Information

# Catalogue

This Catalogue is a compilation of geoscience data and information available at Botswana Geoscience Institute, authorised by Government of Botswana as a custodian of geoscience information

Geoscience Data and Information contained in this Catalogue are made available to the public on cost recovery basis with the aim to encourage advanced exploration and related activities to aid commencement of mining activities and social and economic development.

### Inside this Catalogues

Maps on various sizes shown on the national standards of latitude and longitude coordinates, enclosing the area of interest to ensure delivery of the correct map sheets

Digital data on various media to facilitate accessibility of various formats.

Internal Reports on many aspects of the Geology of Botswana

Bulletins, Consultants Reports and publications of various formats.





## Online portals

This catalogue also introduces Online portals containing various information to enable users to access remotely and improve efficiencies.

Botswana Geoscience Portal <https://www.geos.bgi.org.bw>

This platform integrates all BGI data to promote BGI's visibility to the global village. It is a GIS based and interactive platform which can overlay different datasets from Geology, Geophysics, Geochemistry, Drill holes, Seismic data, and Publications.

Library System - <http://www.library.bgi.org.bw>

This is a platform for managing Geoscience research Collections and Publications among others. It aggregates data for research or business intelligence purposes and ensures library operations are synergised with various standards and regulations of libraries around the world in a library environment.

The portal is a repository for Consultants, Geoscientific, Prospecting licenses and Mineral Resources reports, Annotated Bibliographies, Bulletins, District Memoirs, Records of the Geological Survey, Seismological Bulletin Series, Multimedia, Books, Journals, etc.

Borehole Portal – BOREHIVE <http://www.bh.bgi.org.bw>

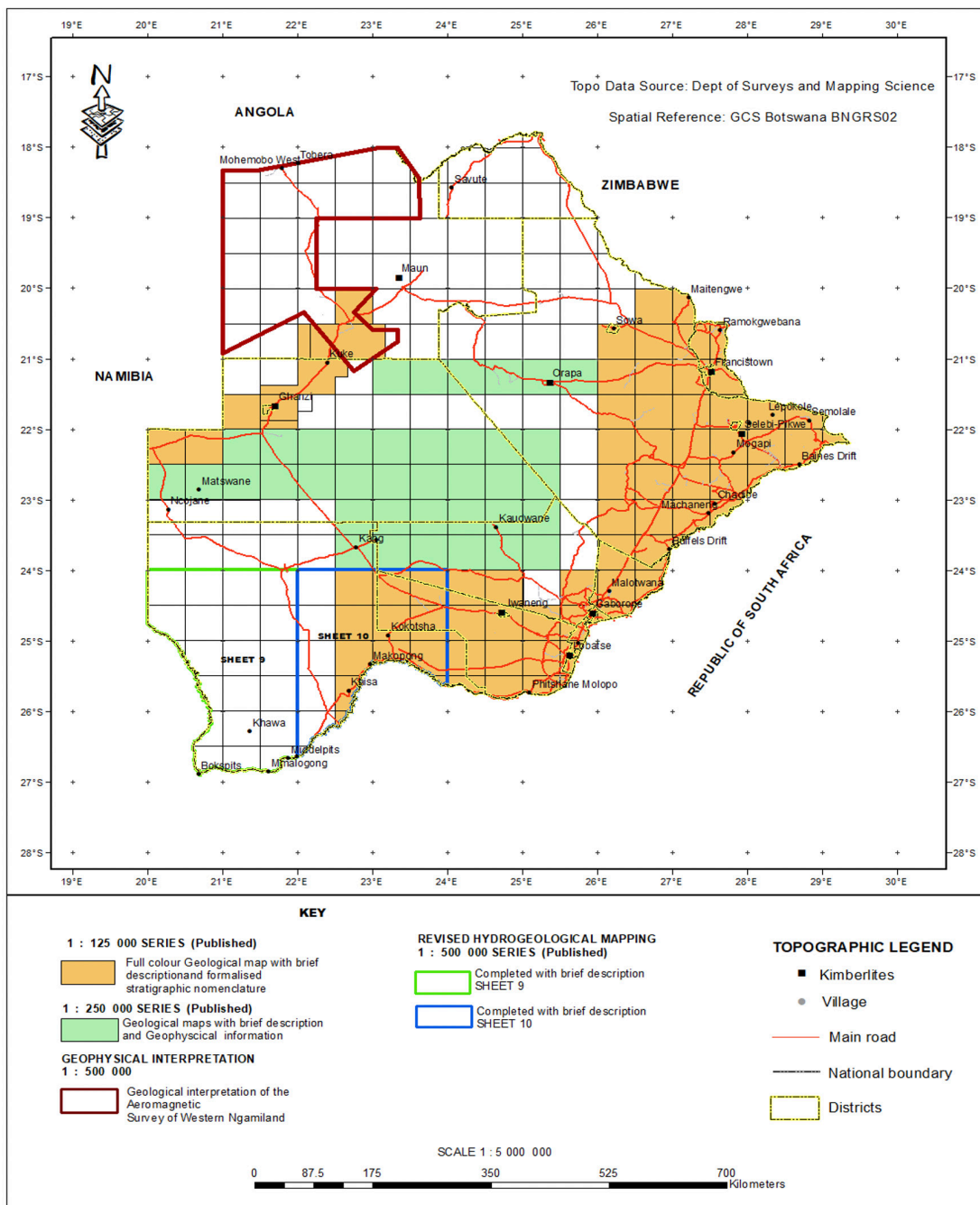
This Portal presents all Borehole information which has been acquired from various sources. It includes reports and records from prospecting and mining companies, farmers, Department of Water and Sanitation as well as Botswana Geoscience Institute.

As the information is from independent sources, it has been captured as submitted and users are urged to exercise their judgment when making decisions based on the information.



**NB.** Boreholes preceded by “Z” are Privately Owned while those preceded by “BH” are owned by Government of Botswana.

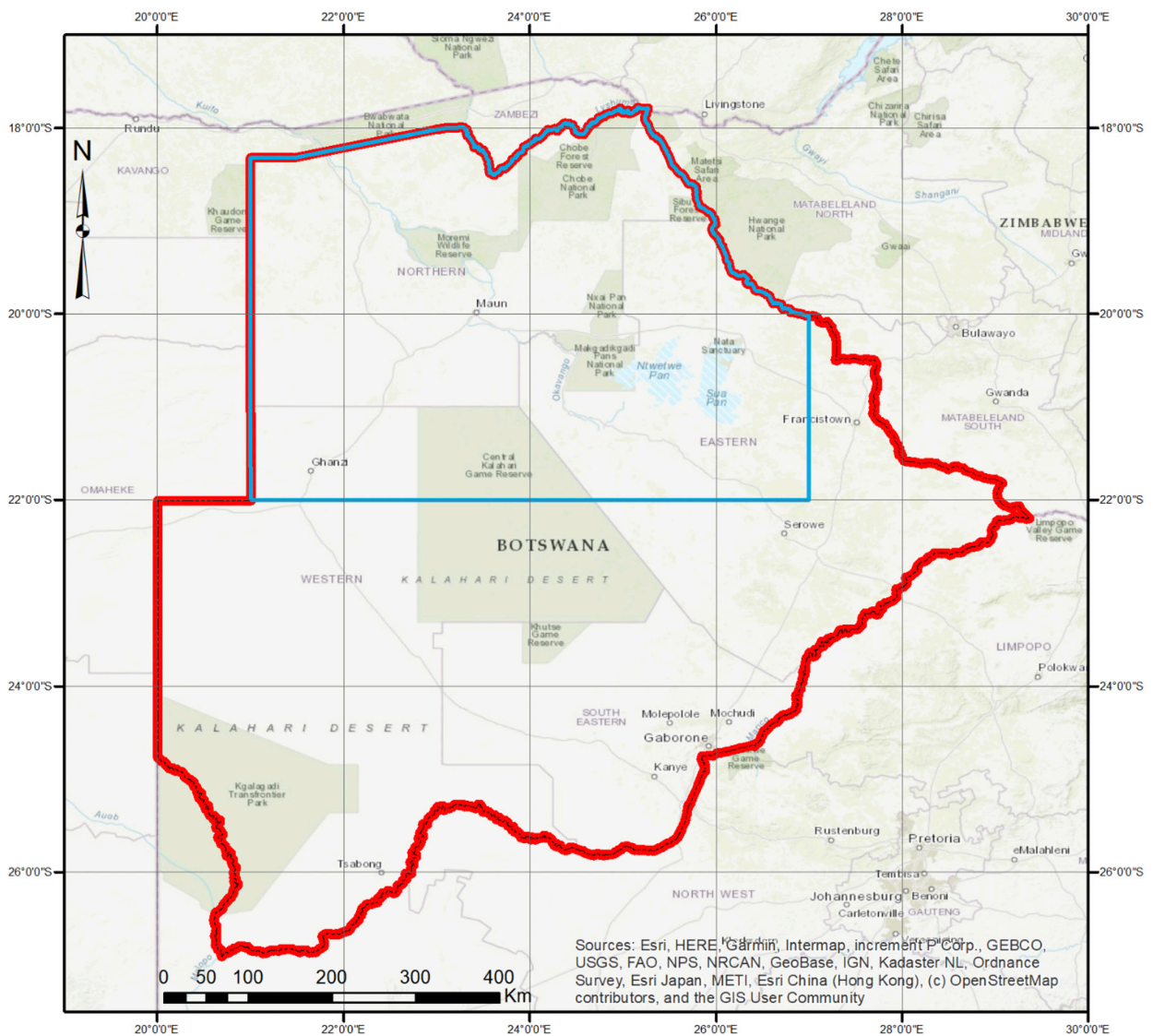
**REPUBLIC OF BOTSWANA  
MAP SHOWING PROGRESS IN GEOLOGICAL MAPPING**





## A. LATEST ADDITIONS

Recently, BGI Completed the Identification and Assessment of Mafic, Ultramafic and Granitic Complexes (Interpretation of Aeromagnetic data of Northern Botswana) Project.



**Figure 1 Project area over northern Botswana (outlined in blue)**



## Interpretation of Aeromagnetic data of Northern Botswana Outputs

Description	Price (PDF)	GIS MXD file
Interpretation of Aeromagnetic data of Northern Botswana – Final Report	P850.00	N/A
Interpretation of Aeromagnetic data of Northern Botswana –National Geological Bulletin.	P650.00	N/A
<b>1:1000 000 scale</b> Mineral Potential and Pre-Kalahari Geological Interpretation Northern Botswana	P500.00	P600.00
<b>1:1000 000 scale</b> Pre-Kalahari Geological Interpretation Northern Botswana	P350.00	P500.00
<b>1:1000000 scale</b> Structural Interpretation Map Northern Botswana	P300.00	P400.00
<b>1:125 000 scale</b> Pre-Kalahari Geological Interpretation 2021D Ntshapelo	P350.00	P450.00
<b>1:125 000 scale</b> Pre-Kalahari Geological Interpretation 2022C Dautsa	P350.00	P450.00
<b>1:125 000 scale</b> Pre-Kalahari Geological Interpretation 2022D Ngwako Pan	P350.00	P450.00
<b>1:125 000 scale</b> Pre-Kalahari Geological Interpretation 2026D Mosetse	P350.00	P450.00
<b>1:125 000 scale</b> Pre-Kalahari Geological Interpretation 2121A Grootelaagle	P350.00	P450.00
<b>1:125 000 scale</b> Pre-Kalahari Geological Interpretation 2121B Khodabis	P350.00	P450.00
<b>1:125 000 scale</b> Pre-Kalahari Geological Interpretation 2121C Ramsden	P350.00	P450.00
<b>1:125 000 scale</b> Pre-Kalahari Geological Interpretation 2121D Ghanzi	P350.00	P450.00
<b>1:125 000 scale</b> Pre-Kalahari Geological Interpretation 2122A North Ghanziland	P350.00	P450.00
<b>1:125 000 scale</b> Pre-Kalahari Geological Interpretation 2126B Matsitama	P350.00	P450.00
<b>1:250 000 scale</b> Pre-Kalahari Geological Interpretation 1821 Tsodilo Hills	P300.00	P400.00
<b>1:250 000 scale</b> Pre-Kalahari Geological Interpretation 1822 Seronga	P300.00	P400.00



## Interpretation of Aeromagnetic data of Northern Botswana Outputs

Description	Price (PDF)	GIS MXD file
<b>1:250 000 scale</b> Pre-Kalahari Geological Interpretation 1823 Duka	P300.00	P400.00
<b>1:250 000 scale</b> Pre-Kalahari Geological Interpretation 1824 and 1724 Savuti	P300.00	P400.00
<b>1:250 000 scale</b> Pre-Kalahari Geological Interpretation 1825 and 1725 Pandamatenga	P300.00	P400.00
<b>1:250 000 scale</b> Pre-Kalahari Geological Interpretation 1921 Qangwa	P300.00	P400.00
<b>1:250 000 scale</b> Pre-Kalahari Geological Interpretation 1922 Gumare	P300.00	P400.00
<b>1:250 000 scale</b> Pre-Kalahari Geological Interpretation 1923 Maun	P300.00	P400.00
<b>1:250 000 scale</b> Pre-Kalahari Geological Interpretation 1924 Mababe	P300.00	P400.00
<b>1:250 000 scale</b> Pre-Kalahari Geological Interpretation 1925 Tshauxaba	P300.00	P400.00
<b>1:250 000 scale</b> Pre-Kalahari Geological Interpretation 1926 Sepako	P300.00	P400.00
<b>1:250 000 scale</b> Pre-Kalahari Geological Interpretation 2021 Cwihabadum	P300.00	P400.00
<b>1:250 000 scale</b> Pre-Kalahari Geological Interpretation 2022 Sehithwa	P300.00	P400.00
<b>1:250 000 scale</b> Pre-Kalahari Geological Interpretation 2023 Makalamabedi	P300.00	P400.00
<b>1:250 000 scale</b> Pre-Kalahari Geological Interpretation 2024 Motopi	P300.00	P400.00
<b>1:250 000 scale</b> Pre-Kalahari Geological Interpretation 2025 Gweta	P300.00	P400.00
<b>1:250 000 scale</b> Pre-Kalahari Geological Interpretation 2026 Dukwi	P300.00	P400.00
<b>1:250 000 scale</b> Pre-Kalahari Geological Interpretation 2121 Ghanzi	P300.00	P400.00
<b>1:250 000 scale</b> Pre-Kalahari Geological Interpretation 2122 Kuke	P300.00	P400.00



## Interpretation of Aeromagnetic data of Northern Botswana Outputs

Description	Price (PDF)	GIS MXD file
<b>1:250 000 scale</b> Pre-Kalahari Geological Interpretation 2123 Deception Pan	P300.00	P400.00
<b>1:250 000 scale</b> Pre-Kalahari Geological Interpretation 2124 Rakops	P300.00	P400.00
<b>1:250 000 scale</b> Pre-Kalahari Geological Interpretation 2125 Orapa	P300.00	P400.00
<b>1:250 000 scale</b> Pre-Kalahari Geological Interpretation 2126 Matsitama	P300.00	P400.00
<b>1:1000000 scale</b> Kalahari Groundwater Resources Potential of Northern Botswana	P300.00	P400.00
<b>1:1000000 scale</b> Pre-Kalahari Groundwater Resources Potential of Northern Botswana	P350.00	P500.00
<b>1:1000000 scale</b> Updated National Geological Map of Botswana (second edition)	P450.00	P650.00
<b>1:1000000</b> Surficial Interpretation Northern Botswana	P300.00	P400.00
<b>1:250000 scale</b> Surficial Interpretation 1821 Tsodilo Hills	P200.00	P300.00
<b>1:250000 scale</b> Surficial Interpretation 1822 Seronga	P200.00	P300.00
<b>1:250000 scale</b> Surficial Interpretation 1823 Duka	P200.00	P300.00
<b>1:250000 scale</b> Surficial Interpretation 1824 and 1724 Savuti	P200.00	P300.00
<b>1:250000 scale</b> Surficial Interpretation 1825 and 1725 Pandamatenga	P200.00	P300.00
<b>1:250000 scale</b> Surficial Interpretation 1921 Qangwa	P200.00	P300.00
<b>1:250000 scale</b> Surficial Interpretation 1922 Gumare	P200.00	P300.00
<b>1:250000 scale</b> Surficial Interpretation 1923 Maun	P200.00	P300.00
<b>1:250000 scale</b> Surficial Interpretation 1924 Mababe	P200.00	P300.00



# Interpretation of Aeromagnetic data of Northern Botswana Outputs

Description	Price (PDF)	GIS MXD file
<b>1:250000 scale</b> Surficial Interpretation 1925 Tshauxaba	P200.00	P300.00
<b>1:250000 scale</b> Surficial Interpretation 1926 Sepako	P200.00	P300.00
<b>1:250000 scale</b> Surficial Interpretation 2021 Cwihabadum	P200.00	P300.00
<b>1:250000 scale</b> Surficial Interpretation 2022 Sehithwa	P200.00	P300.00
<b>1:250000 scale</b> Surficial Interpretation 2023 Makalamabedi	P200.00	P300.00
<b>1:250000 scale</b> Surficial Interpretation 2024 Motopi	P200.00	P300.00
<b>1:250000 scale</b> Surficial Interpretation 2025 Gweta	P200.00	P300.00
<b>1:250000 scale</b> Surficial Interpretation 2026 Dukwi	P200.00	P300.00
<b>1:250000 scale</b> Surficial Interpretation 2121 Ghanzi	P200.00	P300.00
<b>1:250000 scale</b> Surficial Interpretation 2122 Kuke	P200.00	P300.00
<b>1:250000 scale</b> Surficial Interpretation 2123 Deception Pan	P200.00	P300.00
<b>1:250000 scale</b> Surficial Interpretation 2124 Rakops	P200.00	P300.00
<b>1:250 000 scale</b> Pre-Kalahari Geological Interpretation 2025 Gweta	P300.00	P400.00
<b>1:250 000 scale</b> Pre-Kalahari Geological Interpretation 2026 Dukwi	P300.00	P400.00
<b>1:250 000 scale</b> Pre-Kalahari Geological Interpretation 2121 Ghanzi	P300.00	P400.00
<b>1:250 000 scale</b> Pre-Kalahari Geological Interpretation 2122 Kuke	P300.00	P400.00
<b>1:250000 scale</b> Surficial Interpretation 2123 Deception Pan	P200.00	P300.00
<b>1:250000 scale</b> Surficial Interpretation 2124 Rakops	P200.00	P300.00

Maps Available in digital copies. Hard Copies available on Request.

## B. PROVISIONAL GEOLOGICAL MAPS

TITLE/DESCRIPTION	PRICE
<b>1953 – 1955</b> (Provisional Geological Map Back Page Scale: 1:2,5 000 000)	P15.00
<b>1964 – 1965</b> (Provisional Geological Map Back Page Scale: 1: 2 000 000)	P15.00
<b>1966 – 1973</b> (Provisional Geological Map Back Page Scale: 1: 2 000 000)	P15.00
<b>1974 – 1978</b> (including colour mineral concession map Scale: 1: 2000 000)	P15.00
<b>1979 – 1990</b> (including colour mineral concession map Scale: 1: 2000 000)	P15.00
<b>1991 – 1992</b> (including colour mineral concession map Scale: 1: 2000 000)	P15.00
<b>1993 – 1994</b> (including colour mineral concession map Scale: 1: 2000 000)	P15.00
<b>1995 – 1998</b> (including colour mineral concession map Scale: 1: 2000 000)	P15.00

## C. BOOKS AND OTHER REPORTS

	TITLE AND AUTHOR	PRICE
1.	The geology of the Dikgomo di kae area, D. J. Cullen. (1956)	P15.00
2.	The geology of the area South of Lake Ngami E.P Wright (1958)	P15.00
3.	The geology of the Gaberones district E.P. Wright (1958)	P15.00
4.	A reconnaissance report on the salt deposits of the Nata River delta J. van Straaten (1958)	P15.00
5.	The Shoshong series and associated intrusives, D. J. Cullen (1957/80)	P15.00
6.	A note on the development of potable water supplies at depth in the central Kalahari C. Boocock & O. J. van Straaten. (1961)	P15.00
7.	Progress in coal exploration- The Mamabule coalfield area D.Green. (1961)	P15.00
8.	A note on the chemical composition of some ground waters from the Bechuana-land Protectorate, O.J.van Straaten (1961)	P15.00



## C. BOOKS AND OTHER REPORTS

	TITLE AND AUTHOR	PRICE
1.	The geology of the Topisi area, D. Green. (1963)	P15.00
2.	The geology of the area to the east of Gaberones M. T. Jones (1963)	P15.00
3.	The geology of the Makhware hills area, C. M. H. Jennings (1963)	P15.00
4.	The geology of the Foley area I. Gerrard. 1963	P15.00
5.	Geology of the West Tuli area, I. Gerrard 1965	P15.00
6.	Geology of the Matloutse area, R. Mason 1965	P15.00
7.	Geology of the Palapye area, D. Green. (1965)	P15.00
8.	Geology of the Serowe area C. M. H. Jennings 1965	P15.00
9.	Geology of the country around Mahalapye and Machaneng, R. N. Crockett. 1965	P15.00
10.	Geology of part of the Okwa valley, western Bechuanaland R. N. Crockett and C. M. H. Jennings. 1965	P15.00

## D. ANNOTATED BIBLIOGRAPHY AND INDEX OF THE GEOLOGY OF BOTSWANA

	TITLE AND AUTHOR	PRICE
1.	To 31st December, 1966, compiled by C. A. Laughton (1968)	P7.50
2.	1967 - 1970, compiled by J. D. Bennett (1971)	P15.00
3.	1971 - 1976, compiled by G. McEwen (1983)	P22.50
4.	1977 - 1985, compiled by A. P. Lynam (1989)	P22.50
5.	1977 - 1994, The Geology of Botswana; as recorded in unpublished internal reports: compiled by B.G. Aboneng	P37.50



## E. BULLETINS

	TITLE/DESCRIPTION	PRICE
2.	The Karoo System in Bechuanaland, by D. Green (1966).	P45.00
3.	Chemical analyses of rocks, ores and minerals of Botswana, compiled by L. G. Hutton, R. M. Key and S.M. Hutton (1974).	P45.00
4.	Earth Resources Technology Satellite 1 - coverage of Botswana received at Geological Survey Department as at April, 1974, compiled by S. M. Hutton (1974).	P45.00
5.	The National Gravity Survey of Botswana, 1972 - 1973, by C. V. Reeves and D. G. Hutchins (1976).	P45.00
6.	Radiometric age measurements on rocks from Botswana up to the end of 1975, by R. M. Key (1976).	P45.00
7.	A summary of the geology, seismicity, geomorphology, and hydrogeology of the Okavango Delta, by D. G. Hutchins, L. G. Hutton, S. M. Hutton, C.R. Jones and E. P. Loenhert (1976).	P45.00
8.	The geology of the Mojabana area, by I. F. Ermanovics (1979).	P75.00
9.	The geology of the Mahalapye area, by A. C. Skinner (1978).	P75.00
10.	The geology of the country around Moeng, an explanation of Quarter Degree Sheet 2227D, by R. M. Key (1979).	P75.00
11.	The gravity survey of Ngamiland, 1970 - 1971, by C. V. Reeves (1978).	P75.00
12.	The proceedings of a seminar pertaining to the Limpopo Mobile Belt, edited by I. F. Ermanovics, R. M. Key and G. McEwen (1977).	P75.00
13.	The geology of the Mokgware Hills area, an explanation of Quarter Degree Sheet 2226D, by I. F. Ermanovics (1980).	P75.00
14.	The geology of the Kodibeleng area, an explanation of Quarter Degree Sheet 2326A, by A. C. Skinner (1978).	P75.00
15.	The geology of the country around Machaneng and Chadibe, an explanation of Quarter Degree Sheets 2327A and 2327B, by R. M. Key (1979).	P75.00
16.	The geology of the Palapye map area, an explanation of Quarter Degree Sheet 2227C, by I. F. Ermanovics and A. C. Skinner (1980)	P75.00
17.	A geochemical study of stream sediments derived from the Gaborone Granite, Kanye meta-volcanics and adjacent rocks by B.S.I. Marengwa (1978).	P75.00
18.	The geology of the country around Zanzibar, an explanation of that part of the Quarter Degree Sheet 2228C, lying within Botswana by R.M. Key (1979).	P75.00
19.	The geology of the Baines Drift area, an explanation of those parts of Quarter Degree Sheet 2228B AND 2229A that lie within Botswana, by G.C. Clark and T.P. Machacha (1982).	P75.00



## E. BULLETINS

	TITLE/DESCRIPTION	PRICE
21.	The Kalatraverse one report, an explanation of the area between 210 00' and 210 30'S and 230 00' and 260 00' E, by J.N.M.Coates, J. Davies, D.Gould, D.G. Hutchins, C.R. Jones, R. M. Key, N.W.D. Massey, C.V. Reeves, G. Stansfield, I.R. Walker (1979).	P75.00
22.	The proceedings of a seminar on geophysics and the exploration of the Kalahari, edited by G. McEwen (1979).	P45.00
23.	The geology of the Molopo Farms Complex, Southern Botswana, by D. Gould, P.A. Rathbone and G.S. Kimbell, geophysical contributions by A.J. Burley, R.J. Peart M.E. Parker, S.F. Pease. Volume 2 – appendice (1989)	P52.50
24.	The geology of the Tsetsebjwe area (previously known as the Macloutsie area), an explanation of Quarter Degree Sheet 2228A, by D.T. Aldiss (1983).	P75.00
25.	The geology of the Semolale area (previously known as the West Tuli area), an explanation of those parts of Quarter Degree Sheets 2128D and 2129C which lie within Botswana, by D.T. Aldiss (1983).	P75.00
26.	The lithostratigraphy of the Karoo Supergroup in Botswana, by R.A. Smith (1984), Volume 1 Text, Volume 2 charts.	P105.00
27.	The Kalahari Drilling Project, Report on the geophysical and geological results of follow up drilling to the aeromagnetic survey of Botswana, by H.M. Meixner and R.J. Peart (1984) Vol I Text, Vol II charts.	P75.00
28.	The geology of the Phitshane area, an explanation of those parts of Quarter Degree Sheets 2525C and 2525D which lie within Botswana, by; D.T.Aldiss (1985).	P75.00
29.	The proceedings of a seminar on the mineral exploration of the Kalahari, October 1983, Edited by D.J. Hutchins and A.P. Lynam (1985).	P30.00
30.	The gravity survey of the Molopo Farms area, Southern Botswana, by G.S. Kimbell, A.J. Burley, M.E. Parker, S.F. Pease and K.J. Barton (1984)	P60.00
31.	The geology of the Foley area, an explanation of Quarter Degree Sheet 2127C, by R.A. Smith and P. Phofuetsile (1985).	P75.00
32.	Geophysical Geochemical and Geological Investigations in the Ngami and Kheis areas of Botswana, 1980 – 1983, final report, (GS 17 Project – Mineral Exploration of the Kalahari, Compiled by G. Lutdke (1986).	P75.00
33.	The geology of Kanye area, an explanation of Quarter degree sheet 2425C, BY: D.T. Aldiss, A.R. Tombale, R.B.M. Mapeo and M. Chiepe with contributions by, J.M. Barton Jr. (1989).	P75.00
34.	The pre-Cainozoic geology of the Okwa Valley near Tswaane borehole, an explanation of part of Quarter Degree Sheet 2221B, by D. T. Aldiss, (1988).	P75.00



## E. BULLETINS

	TITLE/DESCRIPTION	PRICE
35.	The geology of the Shashe area, an explanation of Quarter Degree Sheet 2127A, by D. T. Aldiss (1989).	P75.00
36.	The geology of the Metlobo and Mabule areas, an explanation of quarter degree sheets 2524B and that part of 2524D which lies in Botswana, by R. B. M. Mapeo, (1990).	P120.00
37.	The Geology of Botswana by Carney J.N.Aldiss D.T. and Lock N.P; 1994.	P90.00
38.	The Geology of the Topisi area, By: R.M.Key, R.B.M. Mapeo, H.E.M. Van Zyl, R.L. Hargreaves, And H. Holmes; 1994.	P75.00
39.	The Geology of the Marico River Area: An explanation of the geology of those parts of quarter degree sheets 2426C and 2426D that lie within Botswana, by G. Nkala and R.M. Key with a contribution by I.D. Koosimile, (1994)	P75.00
40.	The Geology of Bobonong Area, by B.K. Paya, (1996)	P75.00
41.	1:1 000 000 National groundwater pollution vulnerability map explanatory notes by K. Busch, I. Mabua, K. Mokokwe and M. von Hoyer, (1996)	P75.00
42.	The Geology of Lake Ngami by P. Akanyang	P75.00
44.	The history of the geological survey of Botswana from 1948- 1993.by:D. Green(1997)	P15.00
45.	Formalization Of the Lithostratigraphic Units Of The Ghanzi-Chobe, By B.N.J. Modie., P. Akanyang and L.V. Ramokate (1998)	P60.00
46.	Hydraulic Conductivity and Transmissivity of a Water - Table Aquifer in The Boro River System, Okavango Delta, by: O. Obakeng (1997)	P60.00
48.	The geology of the area around Mochudi by B.N.J. Modie.	P75.00

## F. DISTRICT MEMOIRS

	TITLE & AUTHOR	PRICE
1.	The geology of the area around Dukwe and Tlamabele, Central District, Botswana, including maps of Quarter Degree Sheets 2026C and 2126A on the scale 1:125,000, by G. Stansfield (1973).	P120.00
2.	The geology of the area around Maitengwe, Sebina and Tshesebe, Northeast and Central Districts, Botswana, including maps of Quarter Degree Sheets 2027A, 2027C and 2027D on the scale 1:125,000 and a structural map on the scale 1:250,000, by M. Litherland (1975).	P90.00
3.	The geology of the area around Francistown and Phikwe, Northeast and Central Districts, Botswana, including maps of Quarter Degree Sheets 2127B and D on a scale of 1:125,000, by R. M. Key (1976).	P75.00



## F. DISTRICT MEMOIRS

	TITLE & AUTHOR	PRICE
4.	The geology of the area around Mamuno and Kalkfontein, Ghanzi District, Botswana, (including maps of Quarter Degree Sheets 2220A and 2220B on a scale of 1:125,000, by M. Litherland (1982).	P150.00
5.	The geology of the area around Gaborone and Lobatse; Kweneng, Kgatleng, Southern and Southeast Districts, Botswana, including maps of Quarter Degree Sheets 2425D and 2525B, by R. M. Key (1983).	P180.00
6.	The Geology of the area around Dibete and Mmamabula - by I.T.Williamson available with maps.	P120.00
7.	The Geology of the Gantsi Ridge by B. Modie	P90.00

## G. OTHER GEOLOGICAL SURVEY REPORTS

	TITLE & AUTHOR	PRICE
1.	A geological interpretation of Landsat imagery and air photography of Botswana (including a photogeological map of Botswana at a scale of 1:1,000,000), by D. I. J. Mallick, F. Habgood and A. C. Skinner (IGS Overseas Geol. & Min. Res. Report No. 56, 1981).	140.00
2.	G.S. 10 Project-Evaluation of underground water resources of Botswana. Final Report, 1981 (including microfiches of 33 Project Reports), by J. L. Farr, C. S. Cheney, J. H. Baron and R. J. Peart (1981).	140.00
3.	The Petroleum Prospects of Botswana (1984).	140.00
4.	Small-scale Mining in Botswana (1985).	140.00
5.	Mines and Minerals Act, Cap.66.01.	140.00
6.	Petroleum (Exploration and Production) Act, 1981.	140.00
7.	Report on Geological Survey of the Northeast Area, Northeastern Botswana, Phase I-Geological Survey, Geochemical Survey, Metal Mining Agency of Japan, February 1980 (text and appendices).	140.00
8.	Report on Geological Survey of Northeastern Botswana, Phase II, Metal Mining Agency of Japan, February 1981 (text and appendices).	140.00
9.	Report on Geological Survey of Northeastern Botswana, Phase III, Metal Mining Agency of Japan, February 1982 (text and appendices).	140.00
10.	Report on Geological Survey of Northeastern Botswana, Phase IV, Metal Mining Agency of Japan, February 1983.	140.00



## G. OTHER GEOLOGICAL SURVEY REPORTS

	TITLE & AUTHOR	PRICE
11.	International conference on the role of a national Geological Survey in Sustainable development 23rd-25th June 1998. Abstract Volume	140.00
12.	Coal Exploration Records of Borehole. Volume II 1973 (For 1966)	140.00
13.	Northwest Ngamiland Regional Soil Geochemical Data with selected maps in digital format (2001) by J.C. Chatupa and B.B. Direng	140.00
14.	Coal Bed Methane (Digital data)	140.00

## H. HYDROGEOLOGICAL REPORTS

	TITLE & AUTHOR	PRICE
1.	Bibliography of hydrogeology in Botswana, 1986 by J. L. Farr, Chr. Neumann-Redlin and G. Gabaake.	P140.00
2.	Serowe water supply: groundwater resources study. Final Report (1982) by Chr. Neumann-Redlin and M. Sekwale. CNR/5.82 -MS/11/82, 2 vols.	P140.00
3.	The Mochudi groundwater exploration project, 1982-83. Final Report by D. K. Buckley (1983) DKB/4/83.	P140.00
4.	The Palapye groundwater exploration project, 1983-84. Final Report, (1984) by Chr. Neumann-Redlin CNR/6/84, 2 vols.	P140.00
5.	Geological and hydrogeological information from water borehole drilling in Waterberg rocks at Mochudi and Molepolole, 1982-83, by D. K. Buckley, (1984) DKB/6/84.	P140.00
6.	Summary of the results of hydrogeological investigations in the Waterberg Supergroup between Molepolole and Mochudi, and assessment of the groundwater potential (1986) SK/2/86.	P140.00
7.	Lethakeng – Botlhapatlou – Evaluation of groundwater resources (project CTB-TB10/2/16/88-89 Data + Maps) (BRGM)	P140.00
8.	Maun water supply: hydrogeological survey, 1986 BRGM, France 2 vols + maps.	P140.00
9.	Toteng-Sehitwa TGLP area – groundwater potential survey TB 10/2/5/90-91 Reports + appendices GEOFLUX 1994.	P140.00
10.	Hydrogeological survey of the Waterberg Supergroup between Molepolole and Mochudi. BRGM, France (1986) 2 vols + maps + borehole logs.	P140.00
11.	Hydrogeological Survey of Transvaal Supergroup dolomite in the Kanye area. Phase I BRGM, France (1986) 2 vols + appendices + maps.	P140.00
12.	Kanye dolomite groundwater basin hydrogeological investigation and development project phase II TB 10/1/85 main report. Volume 1.	P140.00



## H. HYDROGEOLOGICAL REPORTS

	TITLE & AUTHOR	PRICE
13.	Serowe - Groundwater Resources Evaluation Project, Final Report August 1988 CTB No. 10/2/7/84-85 Swedish Geological SGAB International.	P140.00
14.	Mmamabula Groundwater Resources Investigations Phase 1, Contract No. 10/2/14/86-87, Final Report by Aqua Tech Groundwater Consultants (Pty) Ltd in association with WLPD Consultants. Volume 1 - text, Volume 2 - appendices.	P140.00
15.	A study of the hydrochemical Facies of Groundwater Southern Africa, MSc. thesis University College of London, September 1987 by Chilisana Marobela.	P140.00
16.	Assessment of the Groundwater Potential of the Waterberg area east of Mochudi (Southeast Botswana) vol. 1: Text Vol. 2. Maps by S. Keller. SK/4/88	P140.00

## I. SMALL SCALE MAPS

	PRICE	
1.	The Tectono-Metamorphic Complex of Eastern Botswana, 1:500,000 (1971).	P45.00
2.	Precambrian geology of northeastern Botswana, 1:250,000 (1974).	P45.00
3.	Mineral occurrences and metallogenic districts of eastern Botswana, 1:1,000,000 (1975).	P45.00
4.	Elevation contour map of Botswana, 1:2,000,000 (1976).	P45.00
5.	Photogeological map of Botswana, 1:1,000,000 (approx.) 1978 (2 sheets).	P75.00
6.	The distribution of the Karoo System in Botswana, 1:2,000,000 (1981).	P45.00
7.	Geological framework of western Botswana and adjacent areas, 1:2,000,000(1983)	P45.00
8.	The Pre-Kalahari Geological Map of Republic of Botswana 1: 1 000 000 ((1997) (2 sheets)	P75.00
9.	The Pre-Kalahari Geological Map of Republic of Botswana 1: 1 000 000 ((1997)	P75.00
10.	Progress in Geological Mapping, 1:2 000 000	P15.00



## J. GEOLOGICAL MAPS SCALE 1:125 000

	Map Area	Quarter Degree Sheet	HC=(Hard Copy)
1.	Baines Drift	2228B,2229A, part of 2228D	HC P45.00 Digital P90.00
2.	Dautsa	2022C	HC P45.00 Digital P90.00
3.	Chadibe	2327B	P45.00 Digital P90.00
4.	Dibete	2326c	HC P45.00 Digital P90.00
5.	Dukwe	2026C	P45.00 Digital P90.00
6.	Francistown	2127B	HC P45.00 Digital P90.00
7.	Foley	2425D	HC P45.00 Digital P90.00
8.	Ghanzi	2121D & 2122C	HC P45.00 Digital P90.00
9.	Kalkfontein	2424D	HC P45.00 Digital P90.00
10.	Kanye	2220B	HC P45.00 Digital P90.00
11.	Kodibeng	2425C	HC P45.00 Digital P90.00
12.	Lobatse	2326A	HC P45.00 Digital P90.00
13.	Mabuasehube	Sheet 29	HC P45.00 Digital P90.00
14.	Mabule	2524D	HC P45.00 Digital P90.00
15.	Machaneng	2327A	HC P45.00 Digital P90.00
16.	Magogaphate	2128C	HC P45.00 Digital P90.00
17.	Mahalapye	2326B	HC P45.00 Digital P90.00
18.	Maitengwe	2027A	HC P45.00 Digital P90.00
19.	Mamuno	2220A	HC P45.00 Digital P90.00



## J. GEOLOGICAL MAPS SCALE 1:125 000

	Map Area	Quarter Degree Sheet	HC=(Hard Copy)
20.	Mahalapye	2326B	HC P45.00 Digital P90.00
21.	Maitengwe	2027A	HC P45.00 Digital P90.00
22.	Mamuno	2220A	P45.00 Digital P90.00
23.	Marico River	2426B	HC P45.00 Digital P90.00
24.	Metlobo	2524B	P45.00 Digital P90.00
25.	Mmamabula	2326D, part of 2327C	HC P45.00 Digital P90.00
26.	Mmathethe	2525A	HC P45.00 Digital P90.00
27.	Mochudi	2426A	HC P45.00 Digital P90.00
28.	Moeng	2227D	HC P45.00 Digital P90.00
29.	Moijabana	2226C	HC P45.00 Digital P90.00
30.	Mokgware Hills	2226D	HC P45.00 Digital P90.00
31.	Molepolole	2425B	HC P45.00 Digital P90.00
32.	Molopo Farms Project	2423C, 2423D, 2424C, 2524A, and parts of 2523A, 2523B, 2523D and 2524C	HC P45.00 Digital P90.00
33.	Mosetse	2026D	HC P45.00 Digital P90.00
34.	Mosetse-Matsitama area	2026D and 2126B	HC P45.00 Digital P90.00
35.	Nkange West	2026B	HC P45.00 Digital P90.00
36.	Ngwako Pan	2022D and 2023C	HC P45.00 Digital P90.00
37.	Notwane and Limpopo River	2326D, part of 2327C	HC P45.00 Digital P90.00
38.	Palapye	2227C	HC P45.00 Digital P90.00



## J. GEOLOGICAL MAPS SCALE 1:125 000

	Map Area	Quarter Degree Sheet	HC=(Hard Copy)
39.	Phikwe	2127D	HC P45.00 Digital P90.00
40.	Phitshane	2525C and 2525D	HC P45.00 Digital P90.00
41.	Ramsden	2121C	P45.00 Digital P90.00
42.	Sebina –Tshesebe	2027C & Part of 2027D	HC P45.00 Digital P90.00
43.	Selebi	2227B	P45.00 Digital P90.00
44.	Semolale	2128D & Part of 2129D	HC P45.00 Digital P90.00
45.	Serowe	2226B	HC P45.00 Digital P90.00
46.	Shashe (second edition)	2127A	HC P45.00 Digital P90.00
47.	South Ngamiland	2022D & Parts of 2022C, 2023C	HC P45.00 Digital P90.00
48.	Tlalamabele	2126A	HC P45.00 Digital P90.00
49.	Tsabong	Sheet 32	HC P45.00 Digital P90.00
50.	Tsetsebgwe	2228a	HC P45.00 Digital P90.00
51.	Zanzibar	2228c	HC P45.00 Digital P90.00
52.	Lake Ngami	2022B	HC P45.00 Digital P90.00
53.	Topisi	2227A	HC P45.00 Digital P90.00
54.	Matsitama	2126B	HC P45.00 Digital P90.00
55.	Makunda	Sheet 18	HC P45.00 Digital P90.00
56.	Takatshwaane	Sheet 19	HC P45.00 Digital P90.00



## K. INDUSTRIAL MINERALS MAP

	TITLE	PRICE
1.	Industrial Minerals Map-Gaborone-Lobatse-Kanye-Molepolole area. Scale: 1:250 000 (1985) By W, Gwosdz	P45.00
2.	Industrial Minerals Map – Serowe-Palapye-Mahalapye area. Scale: 1:250 000 (1986) By R. Kreimeyer	P45.00
3.	Industrial Minerals Map of Northeastern Botswana, scale 1:250 000 (1988) by R. Kreimeyer	P45.00
4.	Industrial Minerals Map of Selibe-Bobonong-Tsetsebjwe-Moeng and Sherwood areas,Scale: 1:250 000 (1996) by M. Ntsimanyana	P45.00

## K. INDUSTRIAL MINERALS MAP

	TITLE	PRICE
1.	North Ghanziland, Quarter Degree Sheets 2121B, 2122A and 2122B 1:250,000 (1974).	P45.00
2.	Structural map of Quarter Degree Sheet 2027, 1:250,000.	P45.00
3.	Gantsi/Makunda Quarter Degree Sheets 2220A, B, C and D, 2221A, B, C, and D, 2222A, B, C and D 1:250 000	P45.00

## Hydrogeological Reconnaissance Maps

	TITLE	PRICE
1.	Hydrogeological Reconnaissance Map of Botswana, at 1:500,000 scale (per sheet).	HC: P45.00 PDF: P60.00 Dig: P90.00
2.	Groundwater Resources Map of the Republic of Botswana of 1987 Scale 1:1,000,000 (2 sheets).	HC: P75.00 PDF: P90.00 Dig: P150.00
3.	Groundwater pollution vulnerability map Republic of Botswana 1:1 000 000	HC: P75.00 PDF: P90.00 Dig: P150.00



## Hydrogeological Reconnaissance Maps

	TITLE	PRICE
1.	Reconnaissance Aeromagnetic Survey of Botswana, 1975 – 1977, Technical Report. Terra Surveys. Sponsored by the Canadian International Development Agency.	HC: P45.00 PDF: P60.00 Dig: P90.00
2.	Interpretation of the Reconnaissance Aeromagnetic Survey of Botswana, Final Report, by C.V. Reeves, Patterson Grant and Watson Ltd, September 1978 (including report and catalogue of data, maps sold separately).	HC: P75.00 PDF: P90.00 Dig: P150.00
	<b>(i) Individual map sheets:</b>	
1.	aeromagnetic contours at 1:500,000 scale (10 sheets)	HC P200.00 Digital P300.00
2.	aeromagnetic profiles at 1:500,000 scale (10 sheets)	HC P200.00 Digital P300.00
3.	Surficial and basement interpretation maps at 1:250 000 scale (35 sheets).	HC P200.00 Digital P300.00
4.	Basement interpretation maps at 1:500 000 scale (8 sheets).	HC P200.00 Digital P300.00
5.	Superficial interpretation maps at 1:500 000 scale (8 sheets).	HC P200.00 Digital P300.00
6.	Synoptic interpretation map at 1:1,000,000 scale (2 sheets).	HC P200.00 Digital P300.00
	<b>Airborne Magnetic Survey of Eastern Botswana</b>	
1.	Airborne Magnetic Survey of Eastern Botswana, sponsored by the European Economic Community.	HC P200.00 Digital P300.00
2.	Airborne Magnetic Survey of Eastern Botswana – Final technical report, by Geosurvey International GMBH, July 1986.	HC P200.00 Digital P300.00 HC
3.	Report, Interpretation of the Airborne Magnetic Survey of Eastern Botswana, by Prakla-Seismos AG and Stolberg Ingenieurberatung GMBH, July 1987.	HC P200.00 Digital P300.00
	<b>(ii) Individual map sheets:</b>	
1.	Aeromagnetic profiles at 1:125,000 scale (35 sheets)	HC P200.00 Digital P450.00
2.	Magnetic interpretation at 1:125,000 scale (35 sheets)	HC P200.00 Digital P450.00
3.	Aeromagnetic contours at 1:250,000 scale (8 sheets)	HC P200.00 Digital P450.00
4.	Magnetic interpretation at 1:250,000 scale (8 sheets)	HC P200.00 Digital P450.00
5.	Magnetic Anomaly Map of Eastern Botswana (colour) at 1:1,000,000 scale.	HC P200.00 Digital P450.00



## Hydrogeological Reconnaissance Maps

	TITLE	PRICE
	Airborne electromagnetic and magnetic survey in the Magogaphate area, eastern Botswana, sponsored by the European Economic Community; Final Report by Compagnie Générale de Géophysique, September-November 1989 (7 volumes and map roll including interpretation report, 198 blueline maps and 33 colour maps)	P400.00
	<b>(iii) Individual map sheets:</b>	
1.	Photomosaic base at <b>1:125,000 scale</b> (33 sheets)	HC P200.00 Digital P450.00
2.	Aeromagnetic contours at <b>1:125,000 scale</b> (33 sheets)	HC P200.00 Digital P450.00
3.	Aeromagnetic profiles at <b>1:125,000 scale</b> (33 sheets)	HC P200.00 Digital P450.00
4.	Electromagnetic anomalies at <b>1:125,000 scale</b> (33 sheets)	HC P200.00 Digital P450.00
5.	Aeromagnetic contours and EM anomalies at <b>1:125,000 scale</b> (33 sheets)	HC P200.00 Digital P450.00
6.	Interpretation at <b>1:125,000 scale</b> (33 sheets)	HC P200.00 Digital P450.00
7.	Tau-Amplitude colour profiles at <b>1:125,000 scale</b> (33 sheets)	HC P200.00 Digital P450.00

## M. REGIONAL GEOPHYSICAL MAPS

	TITLE	PRICE
	High Resolution Aeromagnetic Colour Map, at 1:125,000 scale	P45.00

## Molopo Farms Project - 1984

	TITLE	PRICE
1.	Aeromagnetic Maps – Molopo Farms Project scale: 1:250,000.	P45.00
2.	Bouguer Gravity Maps – Molopo Farms Project scale: 1:250 000.	P45.00
3.	Station elevation map – Molopo Farms Project scale 1:250,000.	P45.00



## Molopo Farms Project – 2006

	TITLE	PRICE
1.	Bouguer Gravity Maps – Molopo Farms Project scale: 1:250 000.	P45.00
2.	Station elevation map – Molopo Farms Project scale 1:250,000.	P45.00

## Geophysical Interpretation Maps

	TITLE	PRICE
1.	Western Ngamiland maps at scale: 1:500,000	P60.00
2.	Western Ngamiland maps at scale: 1:125,000	P45.00

	Map Area	Quarter Degree Sheet	HC=(Hard Copy)
1.	Kome Pan	2422B	HC P45.00 PDF:60 Digital P90.00
2.	Morwamosu	2423A	HC P45.00 PDF:60 Digital P90.00
3.	Mabutsane	2423B	HC P45.00 PDF:60 Digital P90.00
4.	Takatokwane	2424A	HC P45.00 PDF:60 Digital P90.00
5.	Maboane	2424B	HC P45.00 PDF:60 Digital P90.00
6.	Khekhe	2422D	HC P45.00 PDF:60 Digital P90.00
7.	Kokotsha	2423C	HC P45.00 PDF:60 Digital P90.00
8.	Keng	2423D	HC P45.00 PDF:60 Digital P90.00
9.	Semane	2424C	HC P45.00 PDF:60 Digital P90.00
10.	Jwaneng	2424D	HC P45.00 PDF:60 Digital P90.00
11.	Makopong	2522B	HC P45.00 PDF:60 Digital P90.00
12.	Werda	2523A	HC P45.00 PDF:60 Digital P90.00
13.	Molopo Farms	2523B &D	HC P45.00 PDF:60 Digital P90.00
14.	Lorolwane	2524A	HC P45.00 PDF:60 Digital P90.00
15.	Metlobo	2422B	HC P45.00 PDF:60 Digital P90.00
16.	Khisa	2423A	HC P45.00 PDF:60 Digital P90.00
17.	Daly's Pan	2423B	HC P45.00 PDF:60 Digital P90.00



## N. 1: 250 000 GEOLOGICAL MAPS

	Map Area	HC=(Hard Copy)
1.	Okwa	HC P45.00 PDF:60 Digital P90.00
2.	Mazeamanong	HC P45.00 PDF:60 Digital P90.00
3.	Kang	HC P45.00 PDF:60 Digital P90.00
4.	Khutse	HC P45.00 PDF:60 Digital P90.00
5.	Mabutsane	HC P45.00 PDF:60 Digital P90.00
6.	Kanye	HC P45.00 PDF:60 Digital P90.00
7.	Molopo	HC P45.00 PDF:60 Digital P90.00
8.	Okwa	HC P45.00 PDF:60 Digital P90.00

## O. OTHER GEOLOGICAL MAPS

	Title	Price
1.	Interpretation of Aeromagnetic data of Central Kalahari Project <b>Report</b>	P450.00
2.	Geophysical Interpretation of Central Kalahari Project airborne magnetic data at scale 1:500,000	P450.00
3.	Regional Structure derived from Aeromagnetic data of Central Kalahari Project	P450.00
4.	Regional Structure derived from Gravity data	P450.00
5.	Total magnetic intensity of the project area	P450.00
6.	1: 350 000 Mineral Potential Map (Molopo Farms area)	PDF -P120 Digital-P240

## P. GRAVITY MAP

	Title	Price
1.	National Gravity Survey Bouguer anomaly map. Scale 1:1 000 000 (2 sheets).	Analogue: P200.00 Digital: P300.00



## Q. HIGH RESOLUTION AIRBORNE MAGNETIC DATA – DIGITAL

1. GRIDS · P60 per Quarter Degree Sheet

2. LINE DATA · P15.00 per MB

3. EM LINE DATA · P45 per MB

## R. PETROLIUM EXPLORATION PACKAGE

With the assistance of Petro-Canada International Assistance Corporation and the European Economic Community, an integrated hydrocarbon exploration program was undertaken from 1987 to 1990 in the Nosop-Ncojane and Passarge sedimentary basins in western Botswana. The programme included 1123 km of reconnaissance reflection seismic, regional gravity and magnetotelluric data and culminated with the drilling of a 4000 m borehole in the Nosop area.

	Title	New Price
1.	Interpretation of the results of stratigraphic well Masetlheng Pan-1 in the Nosop-Ncojane Basin of southwest Botswana; by Stoakes- Campbell Geoconsulting and Boyd Exploration Consultants.	P300.00
2.	The biostratigraphy of the GSD-PCIAC Masetlheng Pan-1 well Botswana, report by G. Dolby & Associates.	P75.00
3.	Petrophysical Report on the PCIAC-GSD Masetlheng Pan-1 Well, Botswana, by P. Kubica, PCIAC.	P75.00
4.	Potassium-Argon dating of seven samples from PCIAC-GSD Masetlheng Pan-1 Well, Botswana.	P150.00
5.	Petrographic analysis of core, sidewall core, and cutting samples from Masetlheng Pan-1, Botswana, by Altamonte Resources (1978) Ltd and PCIAC.	P75.00
6.	Photographs of core from GSD-PCIAC Masetlheng Pan-1 Well, Agat Laboratories.	PDF P50.00/copy
7.	QC report on the VSP survey in the well Masetlheng Pan-1 on behalf of PCIAC and SSD, by W. G. McDowall, GSD.	P50.00
8.	Geochemical evaluation of the PCIAC-GSD Masetlheng Pan-1 well, Botswana and an oil- seep sample from Namibia, by Altebaeumer and Altebaeumer.	P150.00
9.	Well history report, GSD-PCIAC Masetlheng Pan-1 including geological log, by PCIAC.	P150.00



## R. PETROLIUM EXPLORATION PACKAGE

	Title	New Price
10.	Schlumberger wireline geophysical logs for PCIAC-GSD Masetlheng Pan-1.	P150.00
11.	Geophysical (seismic) surveys of the Nosop- Ncojane and Passarge Basins, Botswana, by J.A. Wasilenkoff, PCIAC (includes paper copy of seismic sections)	P140.00
12.	Processing and interpretation of gravity and magnetic data.	P140.00
13.	Interpretation of gravity, magnetic and MT sounding data, by Compagnie Générale de Géophysique	P140.00
14.	Initial Review Report (Oil and Gas Stratigraphic Drilling Project)	P140.00
15.	GSD-PCIAC Masetlheng Pan Specific Well Program and Geological prognosis	P140.00
16.	Hydrocarbon Exploration: Summary of Interpretation of the PetroCanada Seismic Survey 1988 in the Passarge Basin, Central Kalahari. (Including a brief comparison between basin geometry, tectonic style and petroleum geological plays and basement features in the Ncojane-Nosop Basin, SW-Kalahari Botswana.	P140.00
17.	Comments on the Oil and Gas Stratigraphic Drilling Project and Assessment of the Hydrocarbon prospecting of the Nosop-Ncojane in the Kalahari of SW Botswana (K. Hiller. BGR.	P140.00
18.	Oil and Gas Stratigraphic drilling project initial Review report February 1996. ,Acc No.: DGS-REP-2025-1 ,Class No.: Gc 89/1/1 ,Author(s): Quad Consulting limited , ,Year of Publication: 1996 ,Publisher: Quad Consulting limited	P140.00
19.	Data Review and Well Siting Study for the Botswana Kalahari Karoo Basin Area Coalbed Methane Project.(Task 1 and Task 2).February 2002. ,Acc No.: DGS-REP-2342-1 ,Class No.: Gc 154/2/1 ,Author(s): Advanced Resources International , Inc ,Year of Publication: 2002 ,Publisher: Advanced Resources International, Inc	P140.00
20.	Petroleum Potential of the Nama Basin in the Republic of Botswana. April 2007 ,Acc No.: DGS-REP-5040-1 ,Class No.: GC 173/1/1a ,Author(s): Japan Oil Gas and Metals National Corporation , ,Year of Publication: 2007, Publisher: Japan Oil Gas and Metals National Corporation	P140.00



## S. CORESHED SERVICES

	Service/Product	Comments	Price
1.	Initial Service Charge	Price includes first 10 trays.	P750.00
2.	Core Tray Retrieval	Per tray.	P40.00
3.	Borehole Chips Retrieval	Per borehole	P250.00
4.	Core Sampling Charge	Sample/meter/quarter of the cylindrical core. Customer provides copy of test results to BGI after analysis.	P500.00
5.	Bore Hole Chips Sampling	Per 10gram/vial. Customer provides copy of test results to BGI after analysis.	P500.00
6.	Core Cutting	Cutting at site service available at extra costs of mileage and subsistence for 2 officers at P300.00/night.	P200/m
7.	XRF Scanning - Handheld	Per sample scanned. Customer provides copy of test results to BGI after analysis.	P50.00







# Botswana Geoscience Institute

Excellence in Geoscience

## Contact Details

Enquiries regarding information in this Catalogue should be directed to:

**Physical Address:** Plot 11566, Khama 1 Avenue

**Postal Address:** Private Bag 0014, Lobatse, Botswana

**Telephone:** +267 5336719 / 5336739/ 5336729

**Fax:** +267 533 4295

**Email:** [library@bgi.org.bw](mailto:library@bgi.org.bw)

**Website:** [www.bgi.org.bw](http://www.bgi.org.bw)